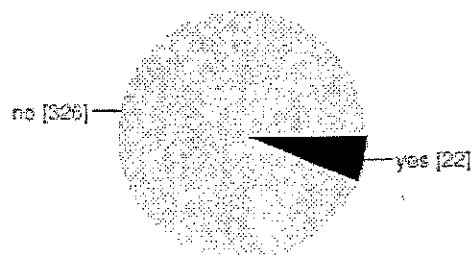


348 responses

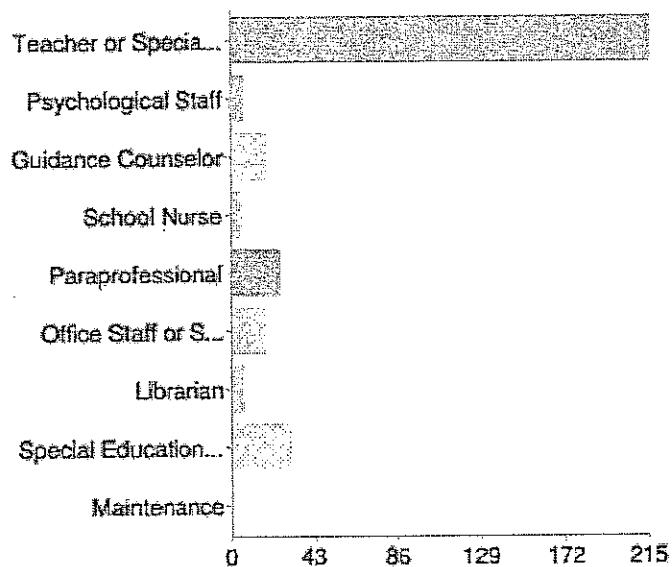
Summary [See complete responses](#)

Are you an Administrator in the school district?



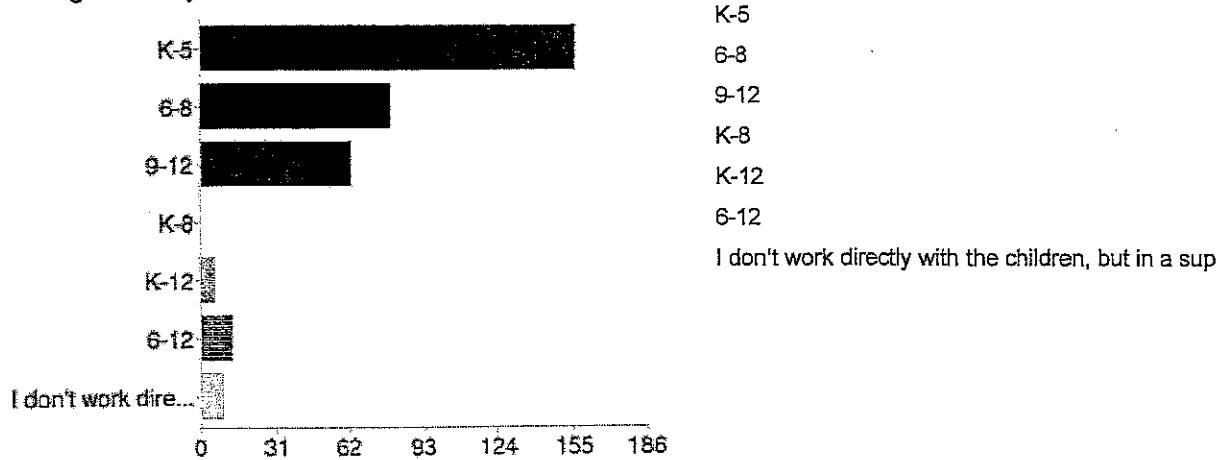
yes	22	6%
no	326	94%

Please identify your position in the school district:

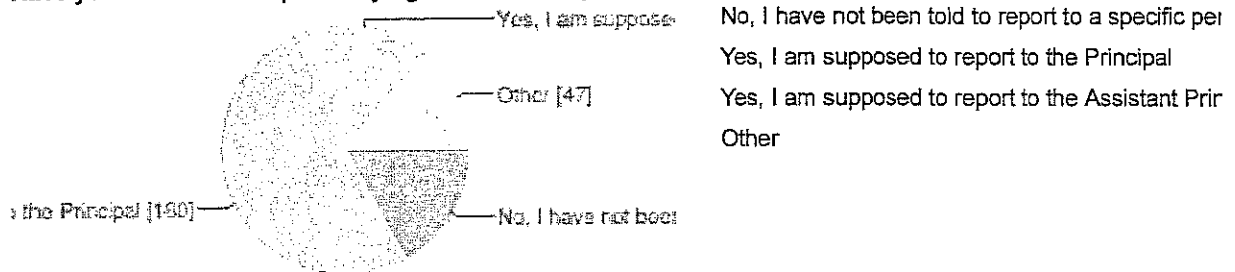


Teacher or Specialist	215	62%
Psychological Staff	6	2%
Guidance Counselor	18	5%
School Nurse	5	1%
Paraprofessional	25	7%
Office Staff or Support Staff	18	5%
Librarian	6	2%
Special Education Educator	31	9%
Maintenance	2	1%

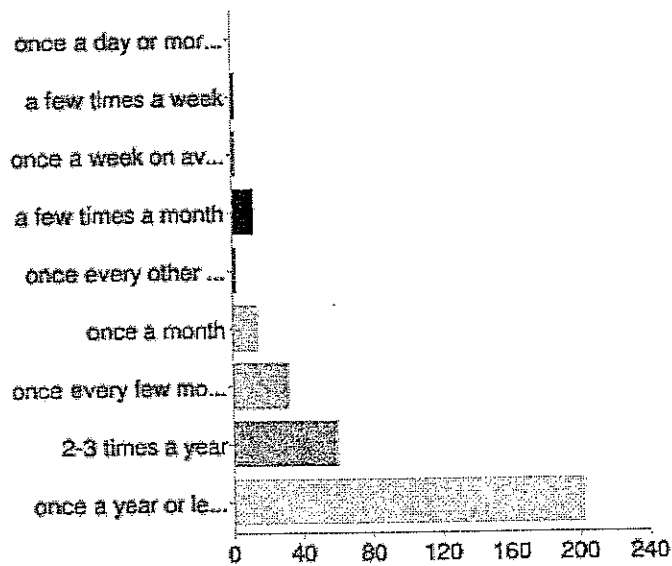
What grades do you work with?



Have you been told to report bullying incidents to a particular individual in your school?

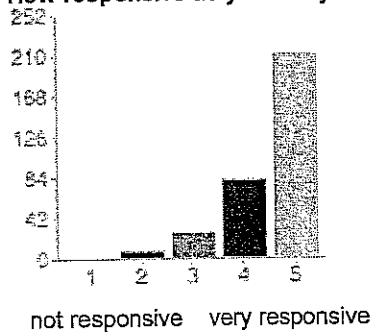


How frequently, on average, do you feel that you report bullying incidents?



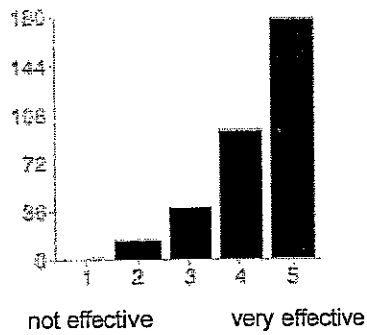
once a day or more often	0	0%
a few times a week	2	1%
once a week on average	2	1%
a few times a month	12	3%
once every other week	2	1%
once a month	14	4%
once every few months	32	9%
2-3 times a year	60	17%
once a year or less often	202	58%

How responsive do you feel your school administration is, to your reports?



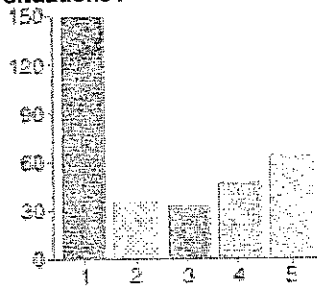
1 - not responsive	0	0%
2	7	2%
3	27	8%
4	81	23%
5 - very responsive	211	61%

How effective do you feel your school administration is in their response to bullying incidents?



1 - not effective	1	0%
2	14	4%
3	38	11%
4	95	27%
5 - very effective	178	51%

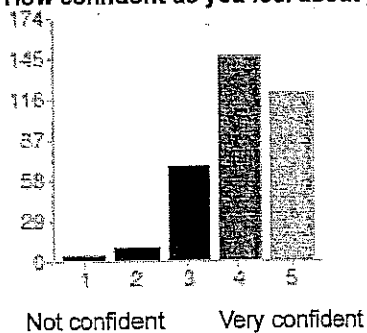
How well does your school administration support the actions YOU take to resolve bullying situations?



1 -they are very supportive	149	43%
2	35	10%
3	32	9%
4	47	14%
5 -they are not supportive	63	18%

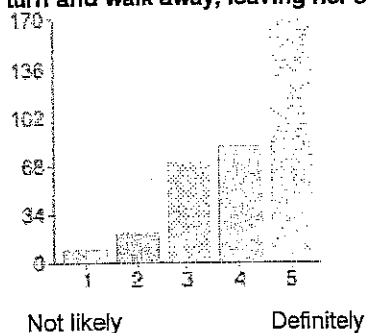
they are very supportivethey are not supportive

How confident do you feel about your own ability to respond to bullying incidents?



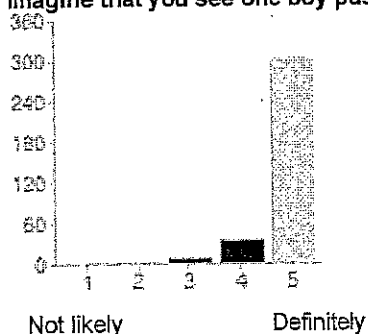
1 - Not confident	4	1%
2	10	3%
3	68	20%
4	146	42%
5 - Very confident	120	34%

Imagine that you see a child in the hallway and a group of girls are laughing at her, and then they turn and walk away, leaving her standing there. Would you intervene?



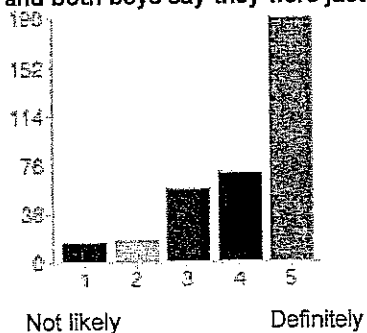
1 - Not likely	9	3%
2	20	6%
3	69	20%
4	81	23%
5 - Definitely	169	49%

Imagine that you see one boy pushing another boy into a locker. Would you intervene?

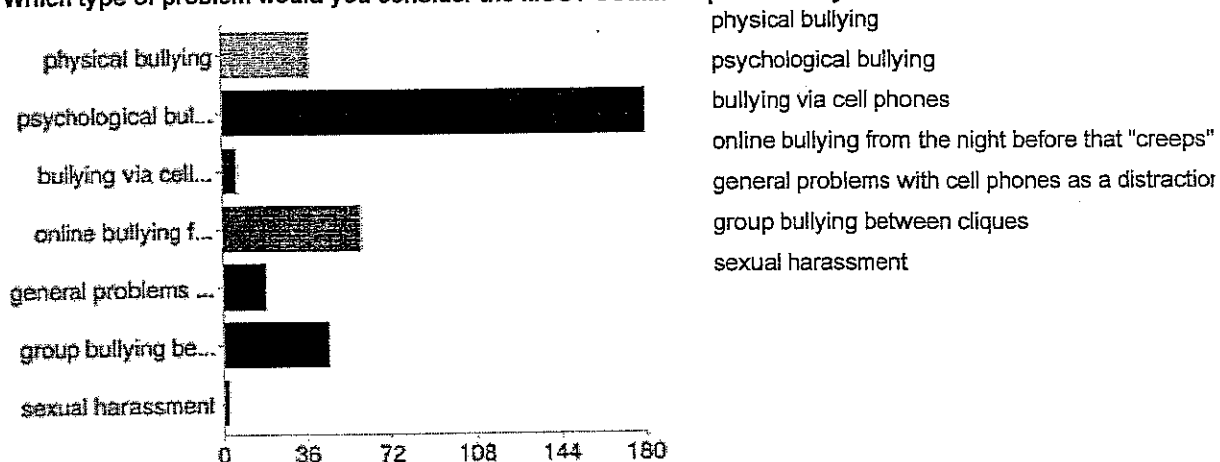
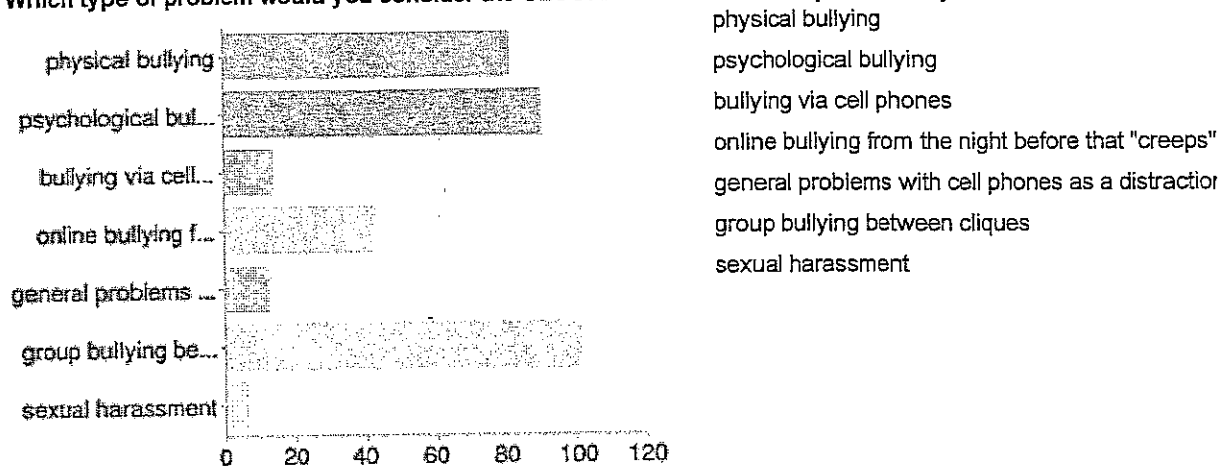


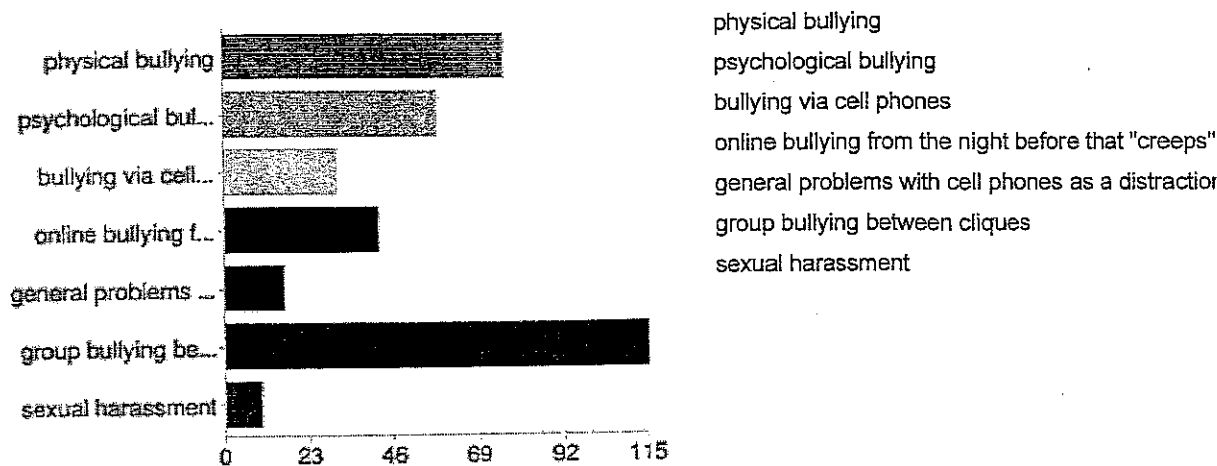
1 - Not likely	2	1%
2	2	1%
3	8	2%
4	34	10%
5 - Definitely	302	87%

Imagine that you see a boy knock the books out of another boys' hands. You ask what's going on and both boys say they were just kidding around. Would you still intervene with either child?

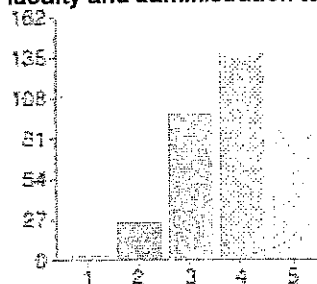


1 - Not likely	15	4%
2	17	5%
3	57	16%
4	69	20%
5 - Definitely	190	55%

Which type of problem would you consider the **MOST COMMON** problem in your school?Which type of problem would you consider the **SECOND MOST COMMON** problem in your school?Which type of problem would you consider the **THIRD MOST COMMON** problem in your school?



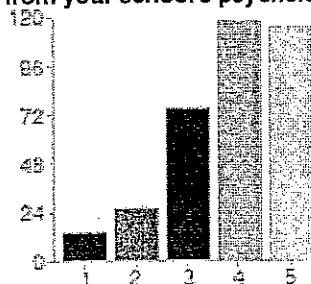
In general, how well trained in bullying intervention and prevention do you consider your school's faculty and administration to be?



Not trained at all Very well trained

1 - Not trained at all	3	1%
2	25	7%
3	97	28%
4	137	39%
5 - Very well trained	86	25%

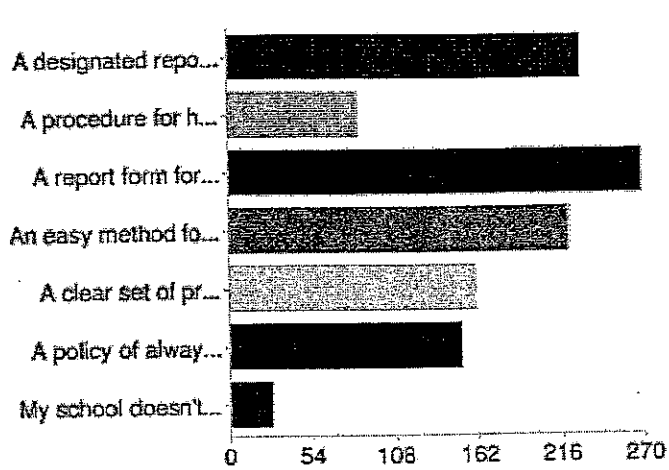
How helpful would it be for you to seek information about bullying and cyberbullying prevention from your school's psychological staff?



not very helpful very helpful

1 - not very helpful	14	4%
2	26	7%
3	75	22%
4	118	34%
5 - very helpful	115	33%

Check off the following procedures which your school follows:



A designated reporter, to take all bullying reports
 A procedure for handling off-campus bullying and
 A report form for bullying incidents
 An easy method for reporting suspected bullying
 A clear set of procedures, listed in the student ha
 A policy of always following up with reporters
 My school doesn't have any of these procedures,

People may select more than one checkbox, so p

